

# WEIGHING TERMINAL **K3000**



## SUS304-IP65

IP65 protection, SUS304 s.s housing  
Stainless steel bracket, s.s PG glands

## QualityDesign

100-240V AC power supply directly  
Easy to operation with big LCD display  
User-friendly operation interface  
Anti-vibration - better for oil tank truck, etc.  
Multi interface: RS232, RS485, Ethernet, etc.  
Super anti-interference technology:

- \* all communication interface isolated design
- \* anti-surge design

### Analog version - K3000:

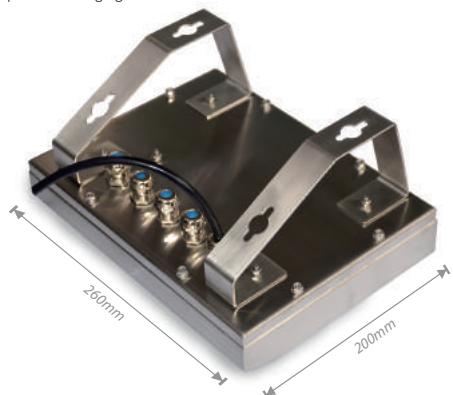
Drive up to 16\*3500hm load cells

### Digital version - K3000D:

Working with Moorrange\* | HBM\* | AWT\* and more...

\* For all those brands, names, logos, brands and other trademarks featured or referred are the property of their respective trademark holders

High accuracy up to 10,000e  
Max.display resolution up to 60,000  
Optional Ethernet output - K3K001  
Optional managing software - ScaleX



## Models

Part No.	110015	110016	157012	157017
Models	K3000	K3000D	K3K001	ScaleX
L.C.Type	Analog	Digital	-	-
Protection	IP65	IP65	-	-

Moorrange  
Precision For Weighing

Moorrange  
Precision For Weighing

Modbus RTU



optional



Clear Read on the sun

IP67 | IP65



## Functions

- K7 with IP67 PBT housing <
- K7s with IP65 s.s housing <
- Stainless steel bracket <
- Big backlit FSTN LCD display <
- the weight can be read clearly even in the sun <
- Rechargeable 6V1.2Ah battery <
- 100-240V power source directly <
- kg/lb, g/oz units exchange <
- Real-time clock and date display <
- Checkweigh with three LED lights <
- Animal weighing function, accumulating, hold <
- x10 accuracy, counting, zero, tare, printing, etc <
- Default with 2 RS232 interface <
- Continuous, print or Modbus output <
- Option of Bluetooth output <
- Optional 7.4V6.8Ah Li-ion battery <
- Option of WiFi output <
- Option of Relay output <

## TechnicalData

<b>Power</b> 100-240V AC direct cable Rechargeable Battery: 6V1.2Ah Optional Li-ion Battery: 7.4V6.8Ah	<b>Display</b> FSTN LCD - 37mm	<b>Approval</b> CE
<b>Excitation Voltage</b> DC5V 1-4 * 3500 load cells 1-8 * 7000 load cells	<b>Units</b> Kg   lb, g   oz	<b>Weight</b> K7 - 2.8kg K7s - 3.2kg
<b>Analog Input Signal</b> ±10mV	<b>Output</b> RS232 * 2 Optional Bluetooth Optional WiFi	<b>Operating Temperature</b> -10°C - 40°C
<b>A/D Resolution</b> 1,000,000	<b>Operating Temperature</b> -10°C - 40°C	<b>Storage Temperature</b> -25°C - 55°C
<b>A/D Rate</b> 10 times/second	<b>Protection</b> K7 - IP67 K7s - IP65	
<b>Display Resolution</b> 1/3,000 - 1/30,000		

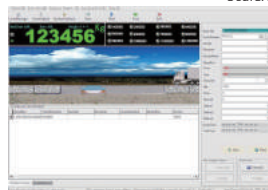


MDSS (optional)

## TechnicalData

<b>Power</b> 100-240V 50/60Hz	<b>Units</b> Kg   t
<b>Excitation Voltage</b> DC10V 500mA up to 16*3500 load cells	<b>Communication</b> Continuous Print Modbus-RTU Modbus-TCP
<b>A/D Rate</b> 120 times/second	<b>Operating Temperature</b> -10°C - 40°C
<b>Display Resolution</b> 1/3,000 - 1/60,000	<b>Storage Temperature</b> -25°C - 55°C
<b>Protection</b> IP65	<b>Weight</b> 3.2kg
<b>Display</b> Dot-Matrix LCD - 240*128mm	

ScaleX



## Models

Part No.	110001	110002
Models	K7	K7s
Housing	PBT	SUS304
Protection	IP67	IP65
Weight	2.8kg	3.2kg